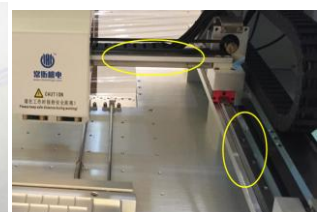
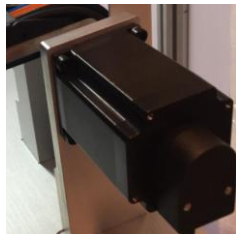
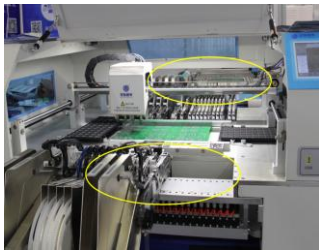
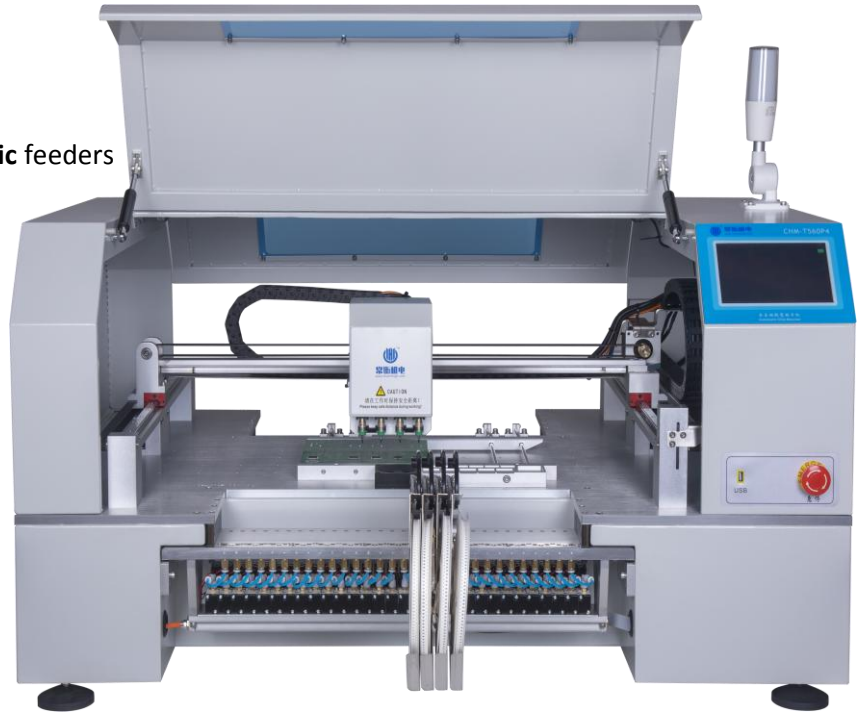
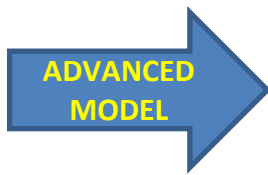


CHM-T560P4 PICK AND PLACE MACHINE

- * **4 Heads** with vision system
- * Support **60pcs** Yamaha pneumatic **CL or electric** feeders
- * Faster placing speed with higher accuracy
- * **Custom IC tray supported**
- * **Closed-loop control**
- * **Embedded Linux system**
- * **Auto Clibrate Mark point**
- * Multi PCB assembly support
- * High quality Juki Nozzles
- * **Touch screen operation,PC built-in**



2 sides- 60 feeder slots; Motors closed-loop control; 4 heads+Juki nozzle; Yamaha feeder; XY axis linear square rail

Model	CHM-T560P4
XYZ Axis travel	600mm(X)×630mm(Y)×20mm(Z) (Highest component support 10mm)
PCB max size	400mm(L)×270mm(W)
Support components	0402/0603-5050/SOT/SOP/QFN/BGA etc.
Mounting speed	Without vision:8000cph; With Vision:5000cph
Control precision	0.025mm
Placement head	4 heads (with Juki nozzle)
Feeding system	Tape feeder support max 60pcs Yamaha Pneumatic feeder(base on 8mm) 11pcs front bulk IC feeder; 20pcs custom IC tray supported
Vision detection	Up-looking camera: component auto correction, max component size 22*22mm) Down-looking camera: PCB mark calibration & component positioning
Motor control	XY Axis stepper motor with encoder, closed-loop control Z Axis origin detection; All motors with flexible S deceleration
Vacuum generation	Buil-in vacuum pumps
Components leakage detection	Vision detection & Vacuum detection
Main board	High-reliability industry motherboard
Touch Screen	7 inches industry screen, no need external computer, USB mouse supported
PCB Conveyor	Manually
Nozzle change	Manually
Operation system	Embedded Linux system
External air source	0.5-0.7 MPa
Support software	Altium designer,Protell99SE,PADS,Kicad,Eagle,Cadint,Cadence Orcad,Cadence Allegro,PROTEUS...etc
PCB Thickness	0.6-3.5mm
Drive system	Synchronous belt & linear guide rail
Power supply	AC220V 50Hz / AC110V 60Hz
Power	250W
Demension	1180mm(L)×870mm(W)×600mm(H)
Net weight	130Kg